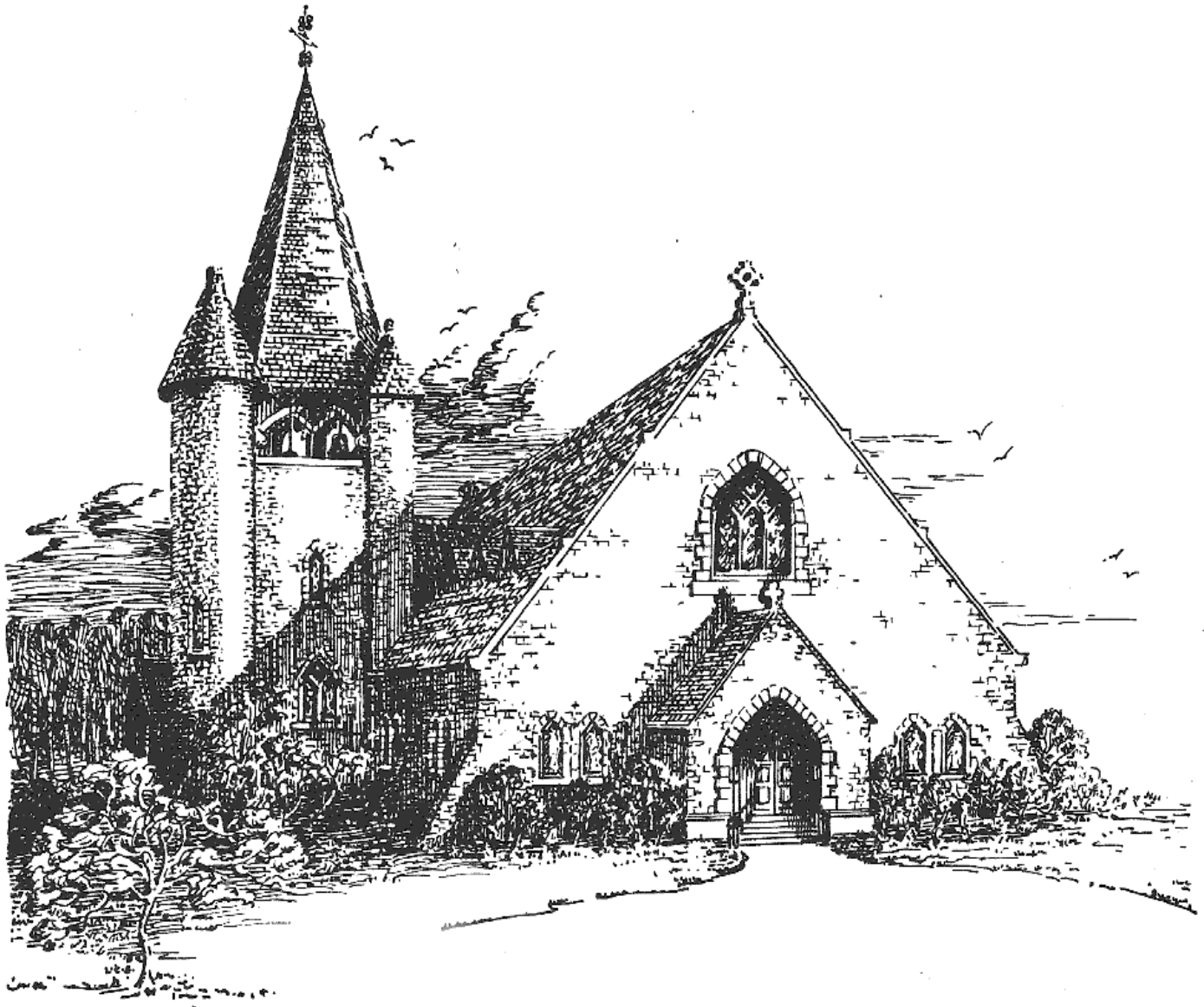




St. Mary's Episcopal Church

Wayne, Pennsylvania

2024 PARISH PROFILE



104 Louella Ave, Wayne, PA 19087

610-688-1313

www.stmaryswaynepa.org



CONTENTS

Mission & Welcome	3	Fellowship.....	13
Our Story	4	Our Resources.....	14
What Makes St. Mary’s Special	5	Finances.....	16
Our Life in Christ	7	Wayne and Beyond	17
Music.....	8	Future for St. Mary’s	19
Christian Formation.....	9	Closing Prayer.....	20
Outreach.....	11		

Our Mission:

God is calling the people of St. Mary's Episcopal Church, Wayne, Pennsylvania to follow Jesus' teaching to love God with all our hearts, souls and minds; and to love our neighbor as ourselves.

Therefore, we love and embrace each other, friend and stranger alike in worship, service and prayer as we seek to live in and share God's Word.

- Adopted by the St. Mary's Vestry, May 2015

Welcome to St. Mary's!

In the heart of Wayne, Pennsylvania, St. Mary's Episcopal Church opens its doors to everyone who seeks fellowship in Christ. As a warmly welcoming parish with approximately 300 members, St. Mary's is a place where everyone makes a difference in parish life. We can all enjoy a pastoral relationship with one another and with our clergy.

We offer two services on Sunday, at 7:45 and 10 a.m., a Thursday healing liturgy at noon and live-streamed morning and evening prayer, Monday through Friday at 9 a.m. and 5 p.m. There are many opportunities for ministry, education, music, fellowship, and outreach.

We come from a variety of economic, social, geographic, and religious backgrounds. Many of us are older, yet a growing number of younger people are joining us in worship, and everyone is welcome. We cherish a congregation with diverse needs, experiences, and talents, and we are firmly united in the Body of Christ.



OUR STORY

For 136 years St. Mary's has been a member of the Diocese of Pennsylvania. In that time, we have had ten rectors.

The Rev. Thomas Conrad	1888-1893
The Rev. John R. Moses	1893-1903
The Rev. Charles Armstrong	1904-1917
The Rev. George W. Anthony	1918-1924
The Rev. Henry C. Mitchell	1924-1953
The Rev. Charles E. Greene	1953-1962
The Rev. William L. Kier	1963-1972
The Rev. Raymond Atlee	1973-1999
The Rev. Michael Pearson	2001-2012
The Rev. Joseph K. Smith	2014-2023



St. Mary's around the beginning of the 19th Century

TESTED BY FIRE

Not all our past history has been pleasant. In 1969, an electrical short started a fire that quickly engulfed the church, leaving only the outer stone structure intact. After careful deliberation, our parishioners decided to rebuild. During reconstruction, services were held in the Father Greene Room in the parish house and even occasionally in private homes. Today the charred Rood Cross from the original church, now in the parish hall, serves as a reminder of all that we can overcome with determination and God's help.



The Rood Cross hangs in the Father Greene Room

What Makes St. Mary's Special

MUSIC, CONCERTS & MORE

Our church has resounded with beautiful music in services and special concerts. The sanctuary enjoys excellent acoustics and a fine Ruffatti organ. Our director of music, Dr. Gordon Turk, is a treasure. An internationally recognized organist, he concertizes widely and draws members of the community to our Evensong, Lessons and Carols, and other concerts. His choir leadership consistently attracts new members to our congregation and his sensitive choice of the music to accompany our worship services is greatly appreciated. When he gives classes on Zoom or in person, they are among the most popular of all our adult formation programs.



Dr. Gordon Turk at the Ruffatti Organ

MORNING & EVENING PRAYER ONLINE



We have experimented with new things during Father Joseph's nine-year ministry. For example, we have instituted morning and evening prayer, beginning as COVID affected church attendance, and continuing to this day. Father Joseph offered the daily office more than 2,000 times during his time at St. Mary's. Today, there are six parishioners who assist our interim rector, Mother Lucy Ann Dure, with the morning and evening office or read the office in her place. We hope to attract more willing readers in the future.

Rental of Church Space to the Liberti Church

Beginning in 2020, St. Mary's has served as church home to a congregation which uses our Father Greene Room for its worship at 10 a.m. each Sunday. Income from the rental of this space has served St. Mary's well, and cooperation between the parishes has been fruitful for both. For example, we have shared food trucks welcoming parishioners for the fall season. The Liberti Church supported this year's inaugural Harvest Food Festival on November 18th; they have shared in our picnics, and we expect further social interactions in the future.

Liberti Church Service in Father Greene Room



LAY LEADERSHIP

The Vestry has endeavored to strengthen lay leadership in several committees, including Building and Grounds, Outreach, Hospitality, Finance, and Christian Formation. These groups are functioning well, and they receive support from the entire congregation.



Interim Rector: The Rev. Lucy Anne Dure

HEALING

Healing ministry is offered at 10 a.m. Sundays.

In the last few months, Mother Lucy Ann has trained four lay members of the congregation to offer healing prayer after Communion each Sunday. This strengthens our already-existing Thursday healing tradition and brings the balm of prayer to many members of our congregation. We hope to see this ministry continue and thrive.

IN TRANSITION

Mother Lucy Ann was already serving as assistant rector, especially in the area of Christian education, but also as a marvelous asset to our sermons and sung Mass on many delightful Sundays. In late summer 2023, the Vestry called Mother Lucy Ann Dure as interim rector until a new rector is installed. She is shouldering the work of leading us during this time of transition with grace and great good humor. We are most fortunate to have this popular, energetic leader at the helm.

Our Life in Christ

SERVICES

We offer two services on Sunday mornings:
7:45 a.m. Rite I spoken service with Holy Eucharist.

10 a.m. Rite II Choral Eucharist, reflecting “high church” traditions. Incense is used on major feast days.

In addition, we offer:

12 p.m. on Thursdays, Healing service and Communion, conducted by the rector in the Lady Chapel.

9 a.m. and 5 p.m. Morning and evening prayer on Facebook, Monday through Friday.



Crucifix in Lady Chapel



Livestream Feed of Sunday Service

MINISTRIES FOR WORSHIP

We support many lay ministries, including the Altar Guild, which has 12 dedicated members, two of whom are assigned each week to prepare for all services held in the church, the Lady Chapel, and the Children’s Chapel.

We have 11 licensed lay chalice bearers who assist with all Eucharistic services.

Fourteen parishioners serve as lay readers.

We have two lay Eucharistic ministers. We are in the process of recruiting more and rededicating existing ministers to assist the clergy in delivering pre-consecrated communion to the homebound or hospitalized.

Approximately 11 acolytes, both adult and youth, assist with our services. We continually encourage others to express their interest in this vital service.

We have four volunteers who do an outstanding job of producing interesting, intimate services for our live stream visitors.

MUSIC

St. Mary's has a long and rich tradition of outstanding classical music in parish life and liturgy. We are committed to continuing this hallmark of our congregation, well-recognized in the larger community. We hope to extend our cooperation with other parishes in joint musical efforts, such as our recent Evensong, celebrated with the choir of the Church of the Good Samaritan in Paoli.



ST. MARY'S CHOIR

There are currently 17 people in the Choir, including four paid soloists. Occasionally, our children also contribute to the musical excellence of our weekly services.

MUSIC MINISTRY LEADERSHIP

The director of all music is Dr. Gordon Turk, an internationally acclaimed organist and concertizer, who spends his summers at Ocean Grove, New Jersey, where he serves as director of summer organ recitals and other musical offerings for a large and appreciative public. Because of the depth of his musical knowledge, which he willingly shares with the congregation, and his sensitivity to the mission of our church, he greatly enriches the spiritual life and growth of each member at St. Mary's. Our musical heritage is in good hands with Dr. Turk.

INSTRUMENTALISTS

We have one flautist and one guitarist who contribute their talents to music at St. Mary's. On occasion, Dr. Turk hires others, who enrich our special concerts and liturgies, for example, at the Advent concert in December 2023.



CHRISTIAN FORMATION

BIBLE STUDY & ADULT FORMATION

The continuing deepening of our understanding of scripture, our tradition, and interfaith dialogue is a core value at St. Mary's. Through our studies, we hope to better experience the love of God. We offer Bible study every Monday at 11 a.m. on Zoom, also classes every Sunday at 9 a.m., preceding our 10 a.m. liturgy. We attend Advent and Lenten quiet mornings. This Advent our guest speaker discussed the mystical writings of Teresa of Avila.



We offer many special learning opportunities, such as a series on Zoom about hymnody, a special Thursday afternoon series on N.T. Wright's book *Surprised by Hope*, a series on C.S. Lewis, and interviews with Muslim and Jewish religious leaders.



This fall, on Sunday mornings, a group attended a class on St. Matthew, a subject which coordinated with the Gospel readings in church until Advent. We also offered a four-part series about God's promises, during the summer.

From time to time, we invite guest speakers, and then read the books which they have written or about which they are experts. Zoom has broadened our possibilities here, and we intend to offer more such classes in the future.



CHILDREN'S PROGRAMS

Before Covid we offered church school classes for all children and, in addition, chapel to children three to six years old. Now we offer chapel to all children during a part of the liturgy, and they return to their parents for Communion. We currently have children from three to ten years of age. This is a time to learn songs; stories from the Bible, especially from the New Testament; and what makes the Episcopal Church special.

From an early age, our children learn that the altar is the cornerstone of our belief. We talk about what makes a table important and what makes the altar an important table: flowers, candles ("I am the Light" of the World), a linen tablecloth, and our cross on which is displayed the Alpha and Omega, wheat, and grapes. One of our favorite songs lists the various names for Jesus which include the Bread of Life, the Prince of Peace, the Good Shepherd, and Messiah.

We expect our children to leave chapel knowing the Lord's Prayer, the colors of the church year along with identifying the most important holidays and people of the Bible.

Since Covid, many of the chapel children continue to attend but they are older which has necessitated a different emphasis. Recently, we have written an Epiphany verse for Sydney Carter's "Lord of the Dance," begun working on our own Stations of the Cross, and built a church based on Marty Haugen's "Let Us Build a House Where Love Can Dwell." The children also enjoy quiz games on biblical people and events.

An undercurrent of teaching is how the beginning of Jesus' life (lamb, swaddling clothes,



angel, Mary atop a donkey, kings) is mirrored at the end of his life (Lamb of God, burial cloths, angel at tomb, donkey on Palm Sunday, and King of Kings). It is a reminder of I am the Alpha and Omega.

Childcare is available for the 10 a.m. service.

Since Covid, there have been no vacation Bible programs, confirmation classes, or mission trips for youth. These have all been a tradition at St. Mary's and we look forward to reviving them with the help of our new rector.

OUTREACH

During the ministry of our most recent rector, Father Joseph K. Smith and his wife Sharon, our congregation and outreach have prospered. At St. Mary's, outreach to those in need starts within our own walls. For at least 45 years, AA and related groups have been meeting weekly in the parish house. At various times, single individuals come to our rector to ask for help with food or other urgent needs.

Little Free Pantry

Five years ago, we established a Little Free Pantry on the corner of Louella and Lancaster Avenues so that members of the Wayne community could take non-perishable food and toiletry items to serve their needs. This anonymous service has become so popular that members of the community who are not connected with St. Mary's in any way have also begun to stock the pantry. It is refilled several times a week, a testimony to the needs that it is meeting, in spite of the affluence of our location.



Noah's Ark Thrift Shop

Noah's Ark, St. Mary's thrift shop in the church's undercroft, is an important and expanding outreach of the parish. Many parishioners donate their time and talents to its functioning. Customers reflect a wide diversity of economic needs. Lower-income families often rely on it for clothes and toys for growing children. At times coats, jackets, and household goods are even donated to families living on the edge.



Volunteer & Donation Drives

Outreach projects have also focused on services in the wider Philadelphia area. In the past, parishioners have cooked and served hot dinners monthly, December through April, at Winter Shelter, a homeless men's shelter at Trinity Memorial Episcopal Church, Philadelphia. We have done the same and also acted as overnight supervisors to local host churches for Family Promise of the Main

Line, a program for homeless families. Our participation in this program has recently been discontinued.

Throughout the year we collect non-perishable food donations for the Food Cupboard, St. Mary's Episcopal Church, Chester. We also collect 'white gifts' for the children to receive as birthday presents or Christmas gifts the following year.



At Christmas, 40-50 festive bags of non-perishable food and other holiday items are prepared for St. Gabriel's Episcopal Church, Philadelphia.



We also participate in a hands-on project called Goodworks, Phoenixville. Volunteers provide home repairs for those who qualify for assistance.



Fundraisers

Money raised at the Noah's Ark thrift shop and at fundraising events like this year's Harvest Food Festival, is donated to local service and charitable organizations.



FELLOWSHIP

During many fellowship events, St. Mary's members not only forge deep friendships but also take time to plan, prepare, entertain, educate, and socialize. We have a wide variety of programs to enjoy.

Most frequent and highly popular, coffee hour takes place following the 10 a.m. Sunday service, with some parishioners staying through the lunch hour. Members take turns providing bountiful refreshments. At times, we also enjoy continuing education programs at coffee hour. Recently, we heard presentations by both Muslim and Jewish leaders from our community as part of continuing education on the value of interreligious dialog.



At coffee hour, we also offer opportunities to complete craft projects, such as Advent wreath-



making. We have an annual Easter egg hunt, and we hang flowers on a wire cross at the front door of the church on Easter Sundays.

We have Shrove Tuesday pancake suppers, Oktoberfest evenings, and progressive dinners.

The Merrie Men host breakfast the first Sunday of each month.

The Women of St. Mary's host daytime and evening lectures or dinners. They also plan, coordinate, and present either Christmas bazaars

or the recent inaugural Harvest Food Festival. We are happy to report that it was a brilliant success, involving the whole community.

Parishioners and friends are welcome to join our Book Club.

Various church groups, like the Vestry, the choir, and others, help to host our popular summer picnics outdoors on the lawn or in the Father Greene Room, in case of rain.

For decades, St. Mary's has enjoyed producing a Children's Christmas Pageant, even during the COVID epidemic, when it was held outdoors with live animals on display. On that occasion, we hoped to show the community around us what our living faith looks like. This year too, the pageant tradition continues.



The Hospitality Committee is focused on newcomers to St. Mary's. Each visitor is encouraged to complete a visitor card either in person or online. They are provided with a gift and a packet of information about our church. Greeters, ushers, and individual church members make extra efforts in reaching out to new and visiting members.

No matter the season or the reason, St. Mary's members joyfully consider fellowship times an important part of the life of our church.

OUR RESOURCES

Buildings and Grounds

St. Mary's sits on a shady lot about half a block square at the corner of Lancaster and Louella Avenues in the center of Wayne, an excellent location which connects us to the life of our community. The property includes three Pennsylvania fieldstone buildings – the church, the parish house, and the rectory – joined together by porticoes. The surrounding grounds provide a welcome green space for parish picnics, vacation Bible programs and other activities. Parishioners take a keen interest in the flowerbeds and other plantings, with groups gathering throughout the year to plant, weed, and prune. We will need to actively recruit younger people to join our present stalwarts in order to preserve the appeal of our gardens. Toward the back of the churchyard there



A tile mosaic of lilies provides the frontal for a white marble free-standing altar. The nave and south transept of the church seats about 350, the Lady Chapel in the north transept about 25. The main sacristy adjoins the altar area and south transept. There is a smaller sacristy for the Lady Chapel.

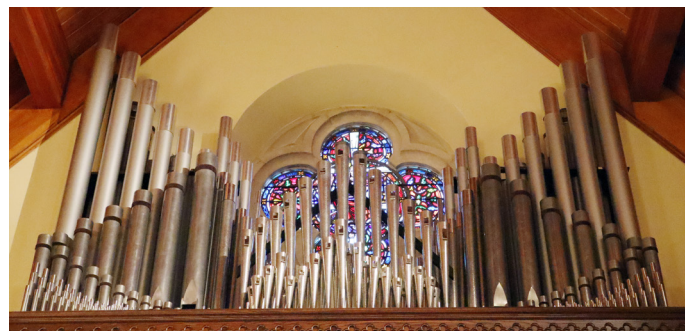


is a small burial ground and columbarium where ashes of loved ones are interred.

The Church

The interior of the church provides a welcome and calming respite from the business of everyday life. Willet Hauser stained-glass windows cast a comforting glow, while icons, paintings, and wall hangings, commissioned and donated over the years by parishioners, create a focus for prayer.

A Ruffatti pipe organ, located in the choir loft at the rear of the church, provides music for worship services and concerts. The organ is located in the rear gallery/choir-loft. Constructed and installed in 1969 by Fratelli Ruffatti, of Padua, Italy, it was enlarged



and enhanced in 2000 by Luley Associates of Pittsburgh, Pennsylvania, including an Antiphonal division located in the south transept. The Antiphonal division can be played from a small independent console in the transept, or through the main console in the gallery. The instrument has 3,301 pipes and is an effective instrument for leading the music of the congregation and choirs, and in concert with other instruments.

A large stone baptismal font is just behind the Lady Chapel, at the entrance to the bell tower. The lower level of the church houses the parish thrift shop (known as Noah's Ark) and the choir robing rooms.



The Parish House

St. Mary's church offices and nursery are located on the first floor of the parish house. Other church offices, church school classrooms, and a youth room are located on the lower floor. Also in this building is the Children's Chapel with artwork inspired by the hymn "All Things Bright and Beautiful." Additionally, the parish house provides space for a small library and two large meeting areas: the Navajo Room where adult classes meet, and the Fr. Greene Room and adjacent kitchen, which is used by Liberti Church on Sunday mornings. The Sunday coffee hour and

the Merrie Men's monthly Sunday breakfast now welcome all worshipers in the Navajo Room. Many local community groups hold meetings in the parish house, and on Election Day, Radnor Township residents cast votes here.

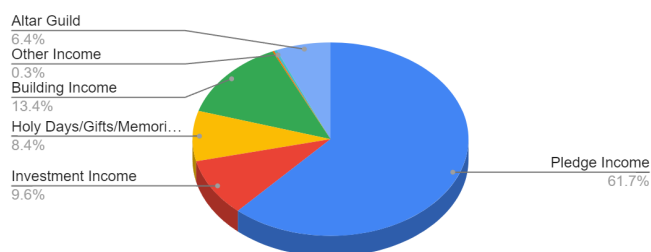
The Rectory

A three-story stone home, with seven bedrooms and three baths, faces Louella Avenue. In addition to the first floor living room, study, dining room, and recently remodeled kitchen, there is a pantry and fully equipped laundry room. The study door opens to a stone patio and lawn beyond. There is also a garage, an attic, and a basement which provide ample storage. In preparation for the arrival of a new rector, several significant updates and improvements have been made, including basement waterproofing, painting throughout, and new cabinetry in the kitchen.

Finances for 2022

This is a generalized representation of our financial status for the year 2022.

2022 Income Breakdown	Amount
Pledge Income	\$296,099.28
Investment Income	\$46,094.72
Holy Days/Gifts/Memorials	\$40,310.83
Building Income	\$64,170.00
Music Program Income	\$880.00
Other Income	\$1,617.00
Altar Guild	\$30,648.32
Total	\$479,820.15



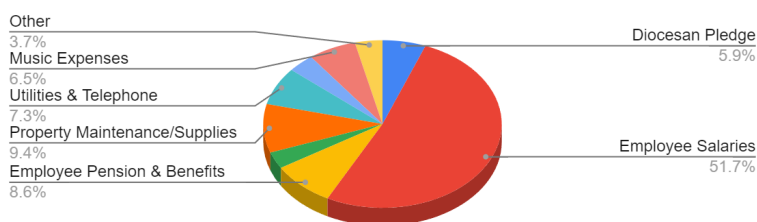
In addition, various groups within St. Mary's, such as Altar Guild, Women of St. Mary's, and Merrie Men make separate outreach contributions in support of local charities.

St. Mary's pledging units have decreased from 136 in 2012 to 87 in 2022. Happily, the amount of pledge income has remained essentially the same.

Future Financial Outlook

We are also presented with significant challenges. Our aging buildings need new roofs; the bell tower needs shoring up and unforeseen maintenance expenses need to be met. We are confident that we will continue to find creative ways to meet these obligations.

2022 Expenses	Amount
Diocesan Pledge	\$27,564.00
Employee Salaries	\$242,862.40
Employee Pension & Benefits	\$40,428.29
Property Insurance	\$15,123.00
Property Maintenance/Supplies	\$44,055.00
Utilities & Telephone	\$34,346.00
Office Administration	\$16,874.00
Music Expenses	\$30,521.00
Other	\$17,542.00
Total	\$469,315.69



Endowment Funds

St. Mary's is fortunate to have five endowment funds, including a new one dedicated to funding future music expenses and programs. Details about other endowment funds are available on request.

The Community of Wayne & Beyond

Our Town

St. Mary's welcoming blue doors face Louella Avenue, just one block from the center of the beautiful town of Wayne, Pennsylvania. Step out the church and rectory doors and within minutes, one can walk to the Wayne Post Office, Radnor Library, Radnor Fire House, and a wide variety of shops. Restaurants and coffee houses, an art deco style movie theater (temporarily closed), a historic hotel, banks, drug stores, and offices fill out the nearby real estate and draw visitors from near and far. The church and rectory are adjacent to one the most attractive Victorian residential communities in the area, one that is also a highly sought-after neighborhood in which to live. The Presbyterian, Baptist, Methodist, and Catholic churches are located within a block or two. The Wayne train station, two blocks away, has frequent commuter runs to Center City Philadelphia. Giant, Acme, and Whole Foods supermarkets are situated along Lancaster Avenue, just a five- to seven-minute drive east or west of St. Mary's. The Lancaster County Farmer's Market is open three days a week less than a mile west of St. Mary's.

Wayne and St. Mary's are part of Radnor Township and Delaware County, Pennsylvania, just thirteen miles west of Philadelphia.

Education

Radnor Township's public school system serves over 3,600 students. The school district includes three elementary schools – Radnor, Ithan, and Wayne, plus Radnor Middle School and Radnor High School. They enjoy a high reputation among schools in our state. Wayne also has a number of nursery schools and day care centers, located in both privately owned buildings and at local churches.

A few blocks to the east are the campuses of Eastern University and Valley Forge Military Academy and College. In the past, St. Mary's had a ministry at Valley Forge Military Academy and has attracted visitors from Eastern College and other schools. Villanova University is two miles east of Wayne. Its rich library, theater, and spectator sports provide many cultural opportunities, and a few St. Mary's parishioners teach there.

Wayne's surrounding area has a number of outstanding school districts (Radnor, Tredyffrin/Easttown, Upper Merion, Haverford), exceptional parochial and private schools (Haverford, Episcopal, Baldwin, Agnes Irwin), as well as Devereaux and other schools geared towards individuals with special needs.

Area Attractions

Approximately five blocks from the church is the Wayne Art Center, with its own exhibition galleries and classes. Wayne possesses two small garden gems: Chanticleer and Jenkins Arboretum & Gardens. A few blocks south of Lancaster Avenue is the popular Radnor Trail, a scenic 2.4-mile converted railroad path for walkers, hikers, and bicycle riders.

Various high school/college productions, amateur/community theater groups, an excellent suburban professional theater (People's Light and Theater Company in Malvern), and a variety of professional theaters in Philadelphia (the Walnut Street, the Arden, and the Wilma, among many others) provide rich possibilities for playgoers and aspiring actors of all ages.

Nearby Philadelphia is a center for art and music – home to the Philadelphia Orchestra, the Opera Company of Philadelphia, the Pennsylvania Ballet, and other excellent musical, choral, and orchestral groups. The Philadelphia Museum of

Art, the Pennsylvania Academy of Fine Arts, the Barnes Foundation, and the Rodin Museum all house world-class collections.

Outside of the city, Lancaster County, the Brandywine River Museum, Longwood Gardens, and Winterthur are also internationally known. Colonial Philadelphia's many historic sites include Independence Hall, the Liberty Bell, Valley Forge National Park (closer to Wayne than to Philadelphia), and the historic houses of Fairmount Park.

Visitors with a scientific bent will enjoy the nation's first zoo, the Franklin Institute, and the Academy of Natural Sciences.

Professional and collegiate sports abound in Philadelphia year-round, where devoted fans cheer for the Eagles, Phillies, Union, Flyers, Sixers, and other favorite teams.

The Philadelphia Marathon, The Mummer's Parade on New Year's Day, The Devon Horse Show, and The Dad Vail Regatta are exciting annual events.

Wayne is just a 90-minute drive from the New Jersey beaches, affectionately known as "The Shore." Besides access to the Atlantic Ocean, the Shore also has boardwalks, amusements, vacation homes, and family resort communities.

An Exciting Future for St. Mary's

St. Mary's is a place of healing and comfort.

As we look forward, we celebrate the unique warmth and spirituality of our congregational life, while acknowledging that there is always room for growth.

- We seek to enhance our congregation with new members of all ages, including young families.
- We seek the gradual return of an expanding church school, vacation Bible program, confirmation classes, and mission projects for youth.
- We hope to follow more closely the spiritual formation of the children who are baptized in our church.
- We look for better communication within our church family and in the community at large.
- We hope for outreach and cooperation within the Christian and non-Christian communities in our midst.
- We hope to continue to offer a variety of adult formation opportunities for a growing number of parishioners.
- We intend to continue our efforts to be good stewards of our buildings and grounds.

There are exciting prospects for our beloved church.

Seeking a Rector

- We seek a rector who can lead us into a stable and deeply faithful future. The first and most essential quality that we look for is an abiding belief in the Great Commandment to love God and neighbor. We also seek a rector who will work with our committees and vestry in mutual and humble respect.
- We hope for a rector who is a teacher and preacher, a person who meets the congregation at its present level of spirituality and leads it into deeper understanding of the Scriptures and our heritage.
- We seek a rector who is comfortable with electronic means of communication, a person who endorses our commitment to the morning and evening office and to live streaming.
- We hope for a rector who is committed to the traditional forms of worship and music that are the unique hallmark of our church.
- We seek a shepherd who is a good administrator and facilitator.
- We look for a rector who can help us to increase our outreach in this community and beyond it.
- We look for someone who is strong and flexible, approachable, compassionate, and conciliatory, who lives faithfully and encourages us to do the same.

With God's Help

We complete this picture of our parish and its future needs with a quotation from the Book of Common Prayer.

Almighty and everlasting God, ruler of all things in heaven and earth, hear our prayers for our parish family. Strengthen the faithful, arouse the careless, and restore the penitent. Grant us all things necessary for our common life and bring us all to be of one heart and mind within your holy Church; through Jesus Christ our Lord. Amen.